

Lancia Flavia 1.8 (carburettor) 815.331, 815.335 & 815.533

NOTES

1. The associated diagrams illustrate point-to-point wiring connexions between components. They are copied from those included in the owners instruction manual. Various production series of the cars may reveal minor changes.
2. Component numbers correspond to those shown in the published diagrams and lists.
3. The first diagram follows the 12 volt supply to the fuse box. From the fuse box, the wiring to each component is composed as a complete circuit. Some wiring and component connexions are common to more than one circuit, and may be duplicated for easy reference.


Colour Code


R = Red
 Y = Yellow
 X = Not shown
 BL = Blue
 BN = Brown
 GY = Grey
 GN = Green
 WH = White
 HZ = Hazel
 PK = Pink


Letter Code


F = Front
 B = Back
 RH = Right Hand
 LH = Left Hand
 HB = High (main) beam
 LB = Low beam
 JB = Plug-in junction box
 LF = Line fuse
 INR = Inner
 OTR = Outer


Symbol Code


 Indicates part of a circuit showing only the terminals relevant to the circuit.

 Wiring interconnexion of 2 or more wires.

 From battery } General Rule
 FUSE } - some exceptions

 Lamp or light

 Switch on/off

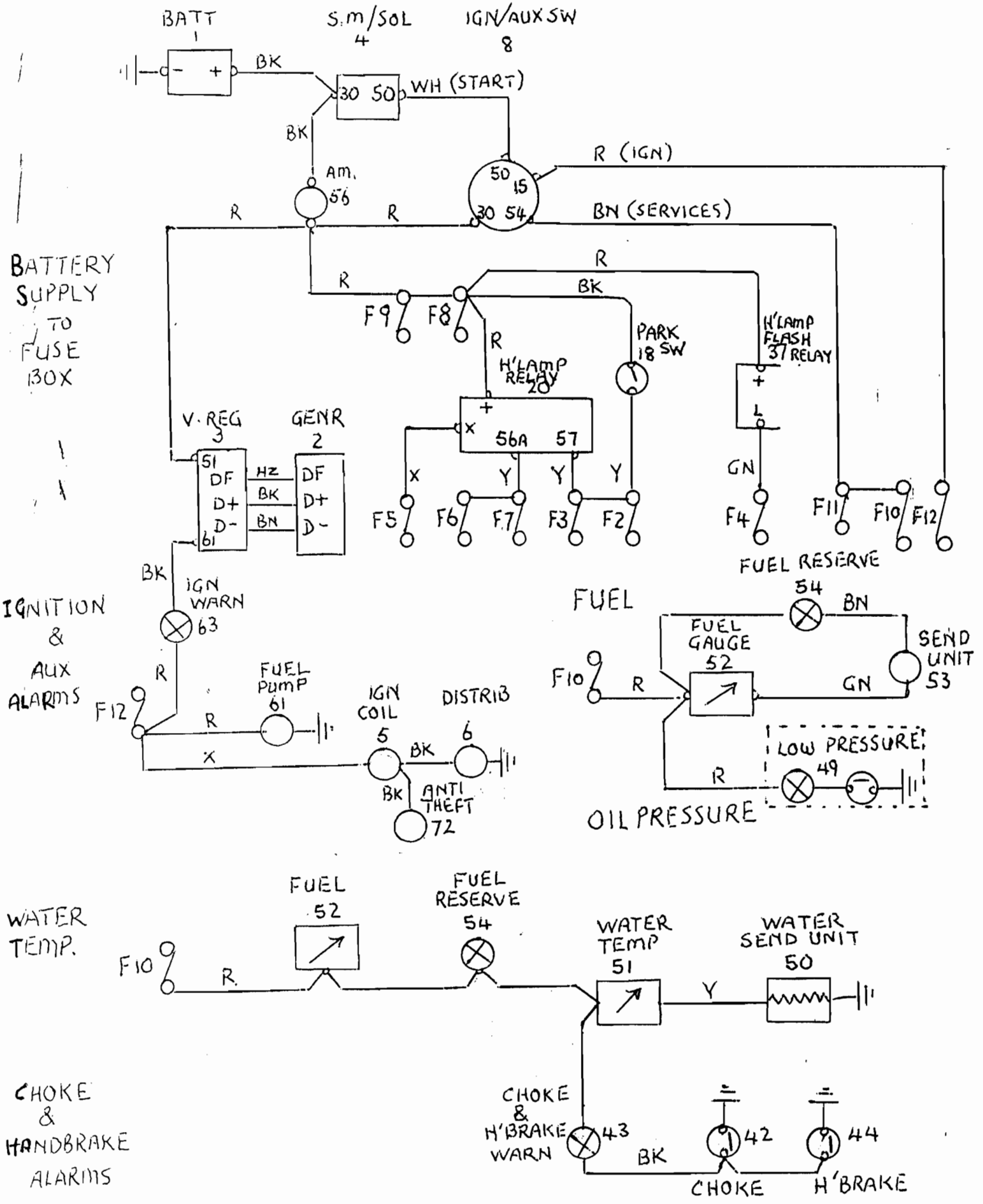
 Switch non locking (push)

Component list

1 = Battery	28 = Main beam filament	56 = Ammeter
2 = Generator	29 = Low beam filament	57 = Interior light and switch
3 = Voltage Regulator	30 = Parking lamp filament	58 = Interior light door switch
4 = Starter Motor	31 = Front dir. indic. filament	59 = Main beam warning light
5 = Ignition coil	32 = Direction indic. repeaters	60 = Radio
6 = Ignition distributor	33 = Stop lamp filament	61 = Fuel pump
7 = Front shunt block	34 = Rear parking lamp filament	62 = Main beam wiring fuses
8 = Ignition key switch	35 = Rear dirn. indic. filament	63 = Generator charge warning light
9 = Fuse box	36 = Reverse lamps	64 = Door open marker lamps
10 = Instrument panel lights	37 = Headlamp flash relay	65 = Cigar lighter
11 = Inst. panel lights switch/rheostat	38 = Number plate lamps	66 = Rear shunt block
12 = Direction indic. flasher	39 = RH dirn. indic. warning light	67 = Plug-in junction
13 = Direction indic. flasher control	40 = LH dirn. indic. warning light	68 = Boot light
14 = Headlamp flash control	41 = Stop light switch	69 = Boot light switch
15 = H/lamp flash control contact assembly	42 = Choke warning light switch	70 = Rear window demister switch
16 = Dip switch push button	43 = Choke+h/brake warning light	71 = Rear window demister motor
17 = Low beam switch	44 = H/brake warning light switch	72 = Blosster anti-theft
18 = Parking lamps switch	45 = Horn electro-compressor	73 = Rear window regulator motor control switch (Sport only)
19 = Parking lamps warning light	46 = Horn relay	74 = Rear window regulator motor (sport only)
20 = Headlamp control relay	47 = Horn control	
21 = Engine compt. light	48 = Reversing lamp switch	
22 = Eng. compt. light switch	49 = Low oil pressure light & switch	
23 = H/lamp flash push button	50 = Water temp. gauge sender	
24 = Windscreen wiper switch	51 = Water temperature gauge	
25 = Windscreen wiper motor	52 = Fuel gauge	
26 = Heater switch	53 = Fuel gauge sender	
27 = Heater motor	54 = Low fuel warning light	
	55 = Plug-in socket	

[Items 70 & 71 optional fitting]

LANCIA FLAVIA
 1.8 CARB SPORT & CONVERTIBLE
 815 533 : 815 335

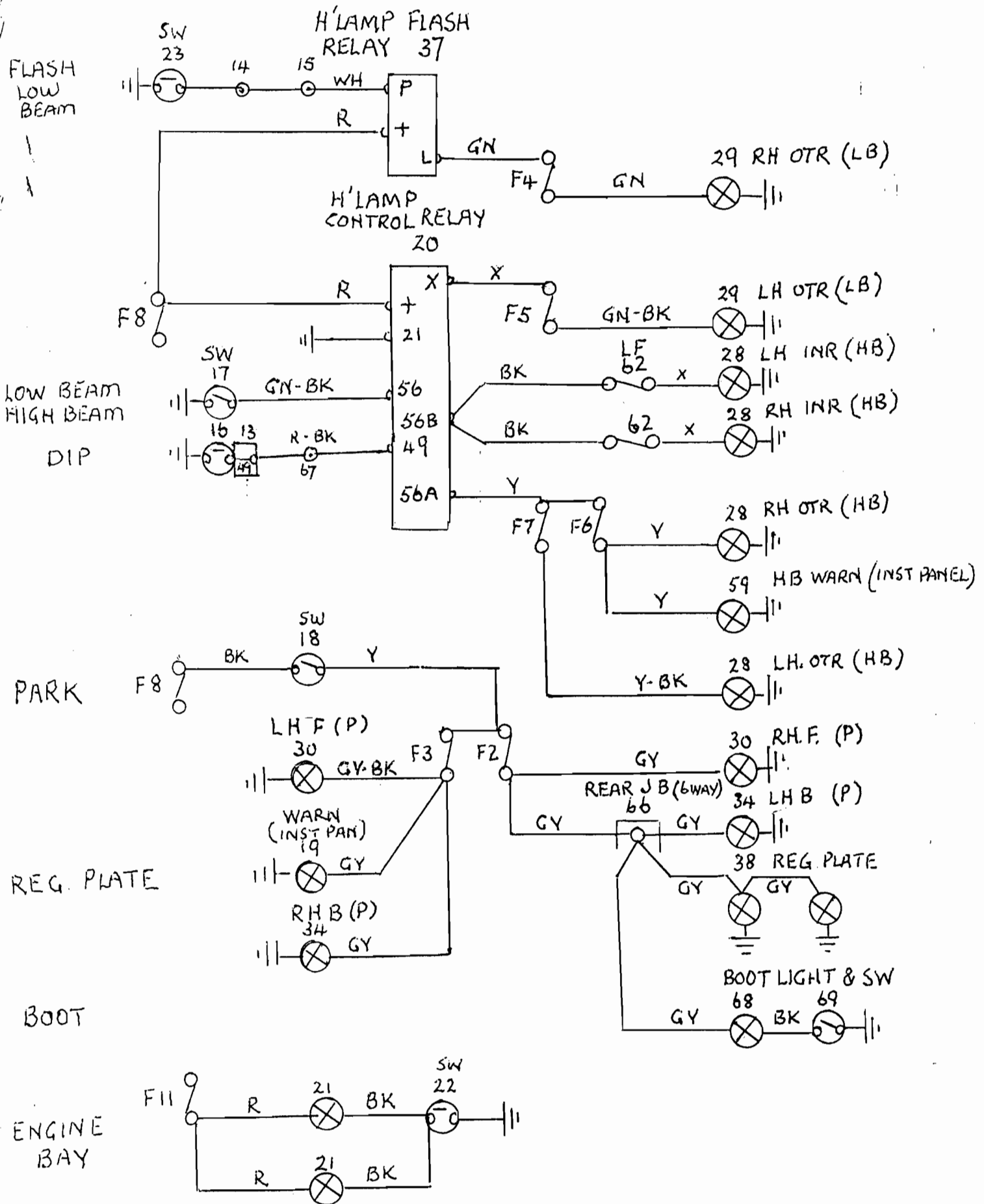


LIGHTING

LANCIA FLAVIA

1.8 CARB. SPORT & CONVERTIBLE

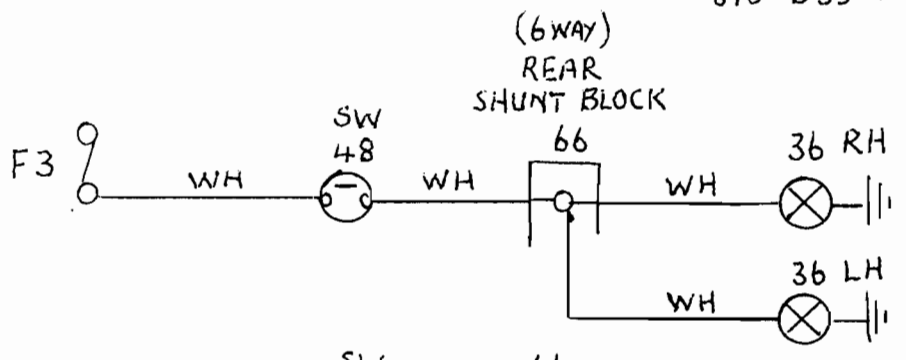
815.533 : 815.335



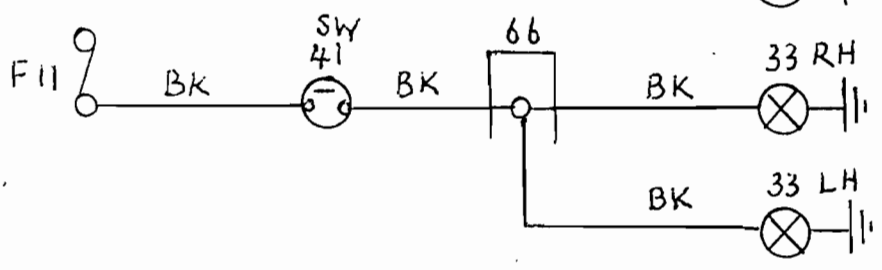
LIGHTING

LANCIA FLAVIA
1.8 CARB. SPORT & CONVERTIBLE
815.533 : 815.335

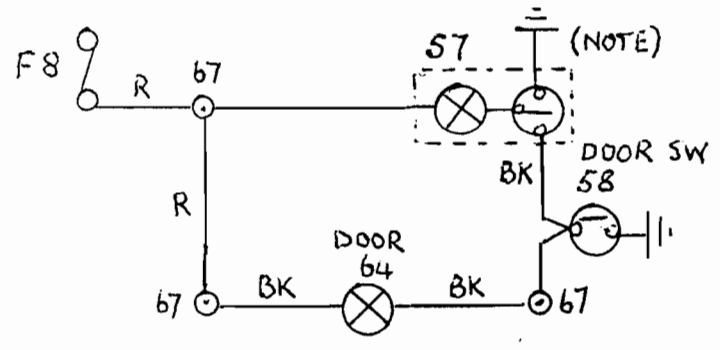
REVERSE



STOP

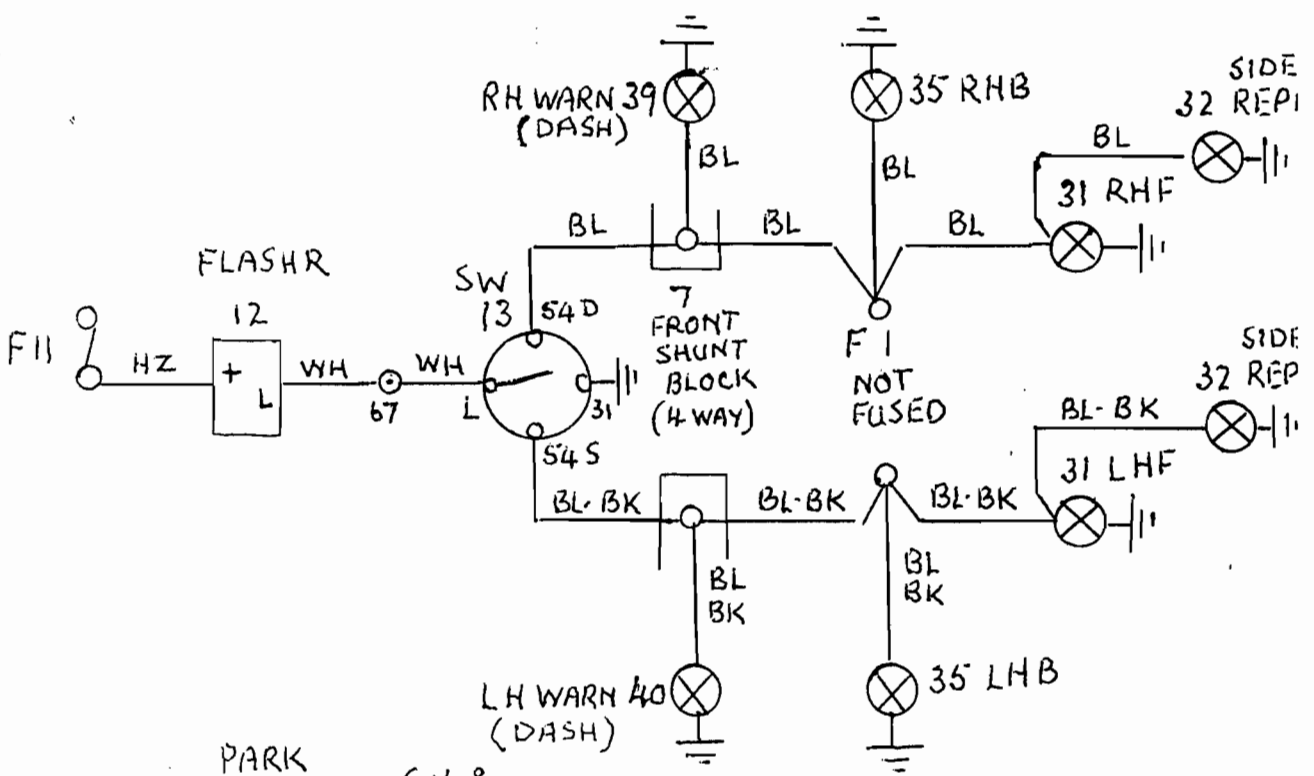


INTERIOUR LIGHTS

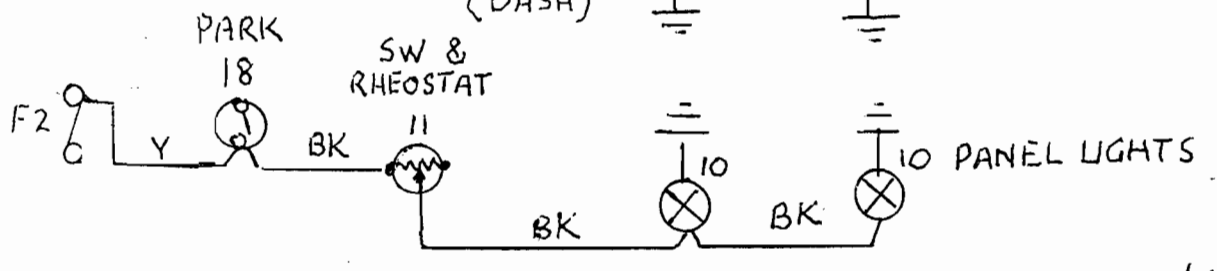


DUPLICATE RH & LH CIRCUITS
NOTE
CONVERTIBLE CONTROL IN UNIT WITH REAR VIEW MIRROR
SPORT CONTROL UNDER DASH

DIRECTION INDICATORS



INSTRUMENT PANEL



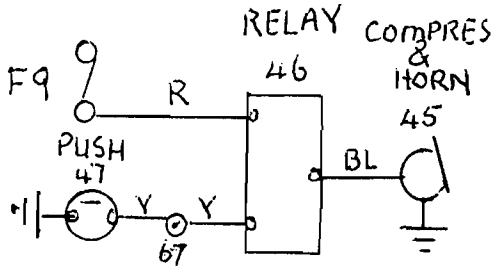
MISC SERVICES

LANCIA FLAVIA

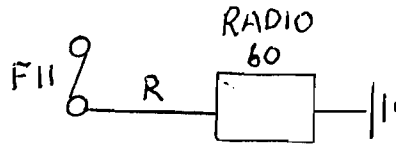
1.8 CARB SPORT & CONVERTIBLE

815 533 815 335

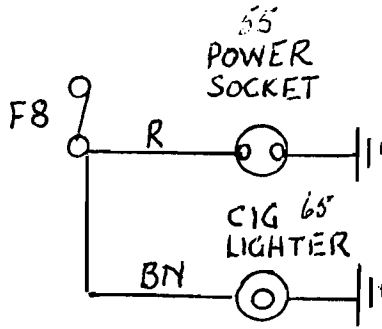
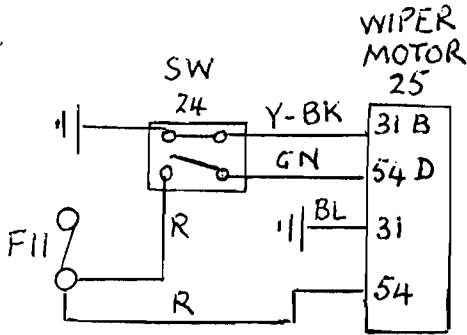
HORN



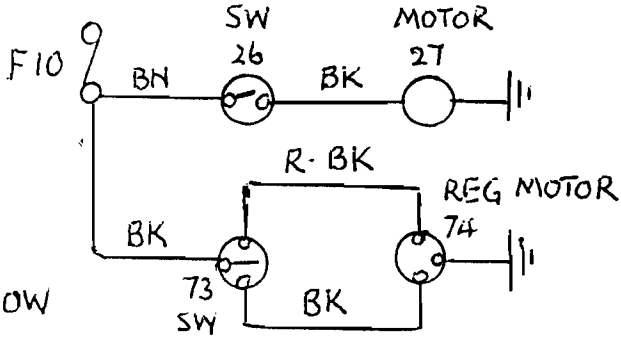
RADIO



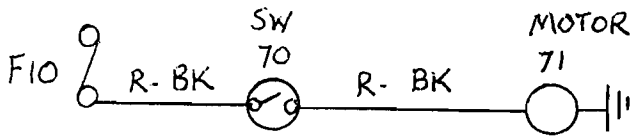
SCREEN WIPER



HEATER VENTILATOR



REAR WINDOW REGULATOR SPORT ONLY



REAR WINDOW DEMIST OPTIONAL